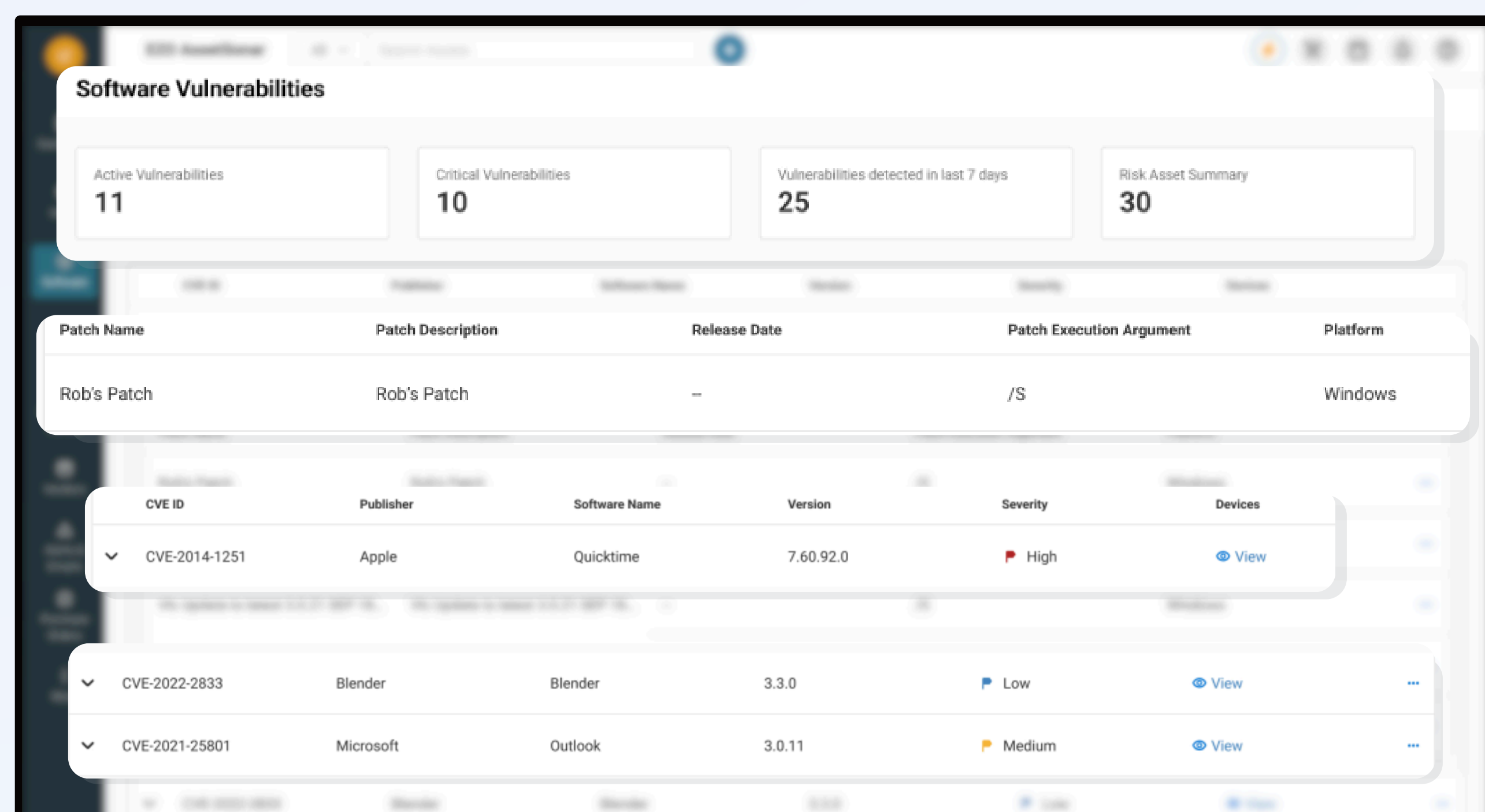
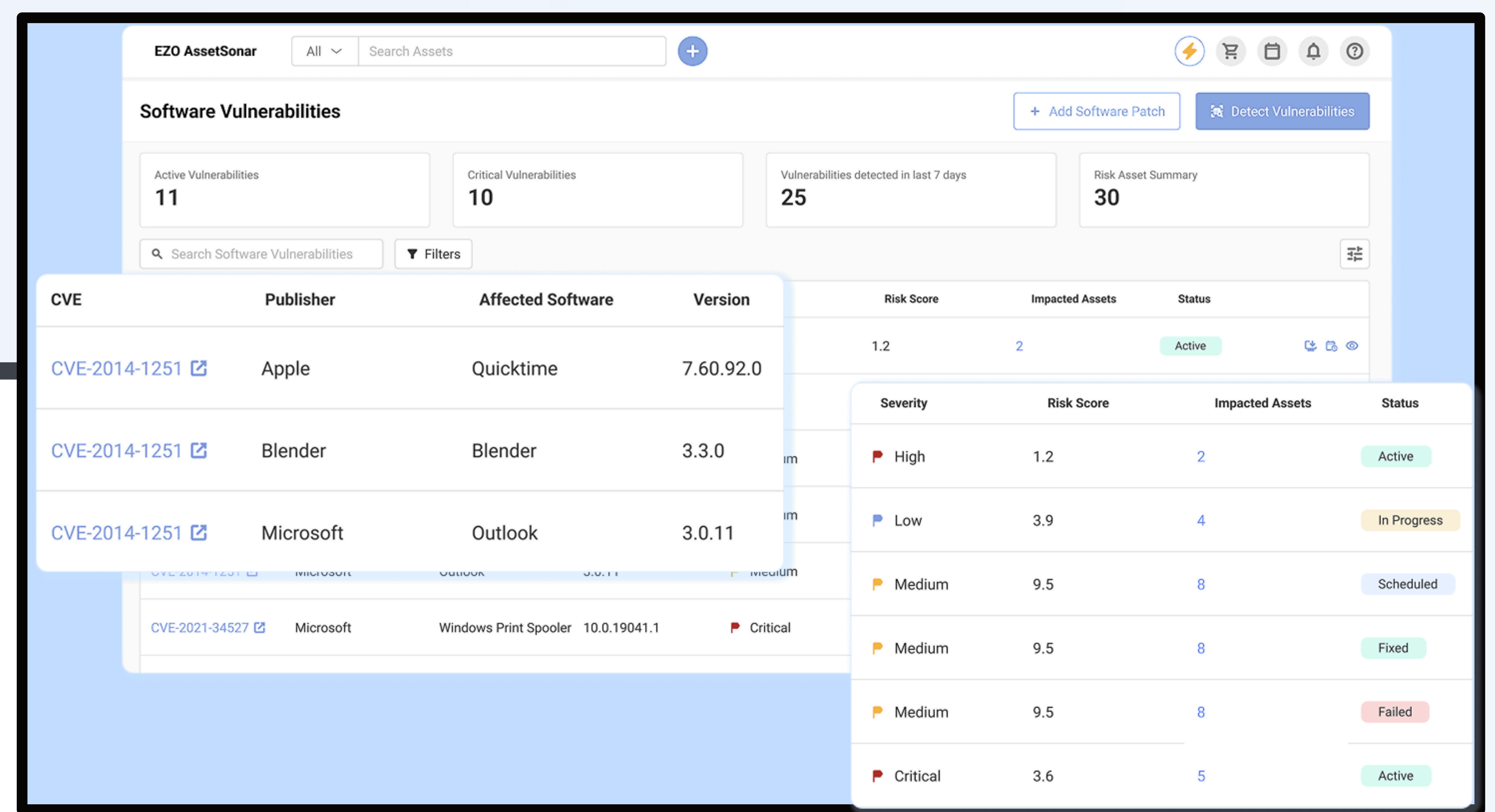


AssetSonar Patch Management

Close the Detect-to-Fix Gap

AssetSonar Patch unifies vulnerability detection, risk-based prioritization, seamless cross-platform deployment, and audit-ready visibility, all in one platform. With this end-to-end approach, IT teams can patch smarter, prove progress faster, and eliminate the inefficiencies of juggling multiple tools.



How This Helps:

- ✓ Eliminates blind spots
- ✓ Real-time vulnerable asset view
- ✓ Single source of truth

Vulnerability Detection & CVE Mapping

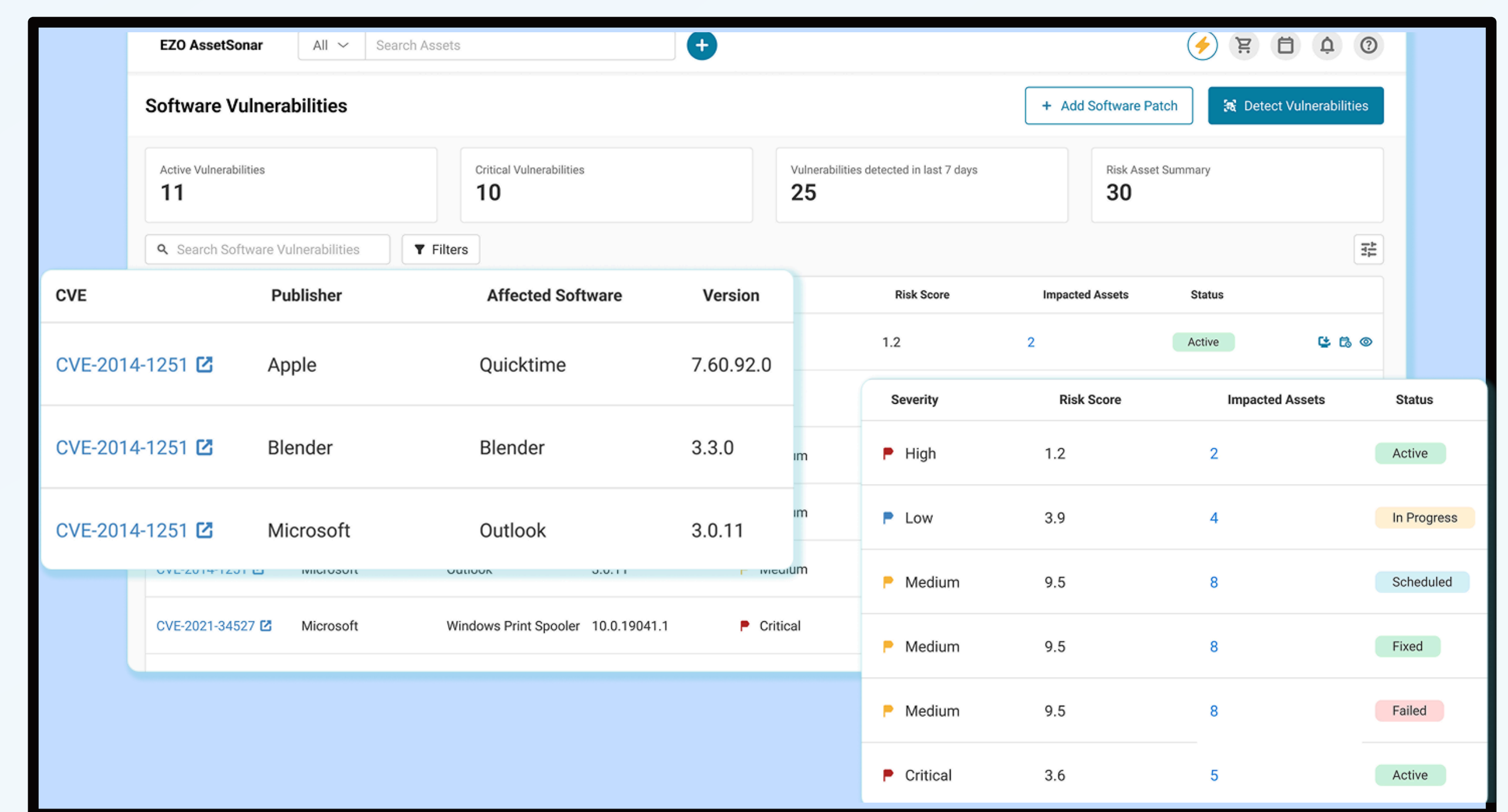
AssetSonar agents scan endpoints and map results directly to the NIST National Vulnerability Database (NVD), giving IT and Security teams unified visibility into open CVEs across Windows, Mac, Linux, and third-party apps

- Consolidates detection across OS and apps into one view
- Provides security teams with continuous, up-to-date risk data

Risk-Based Prioritization Beyond CVSS

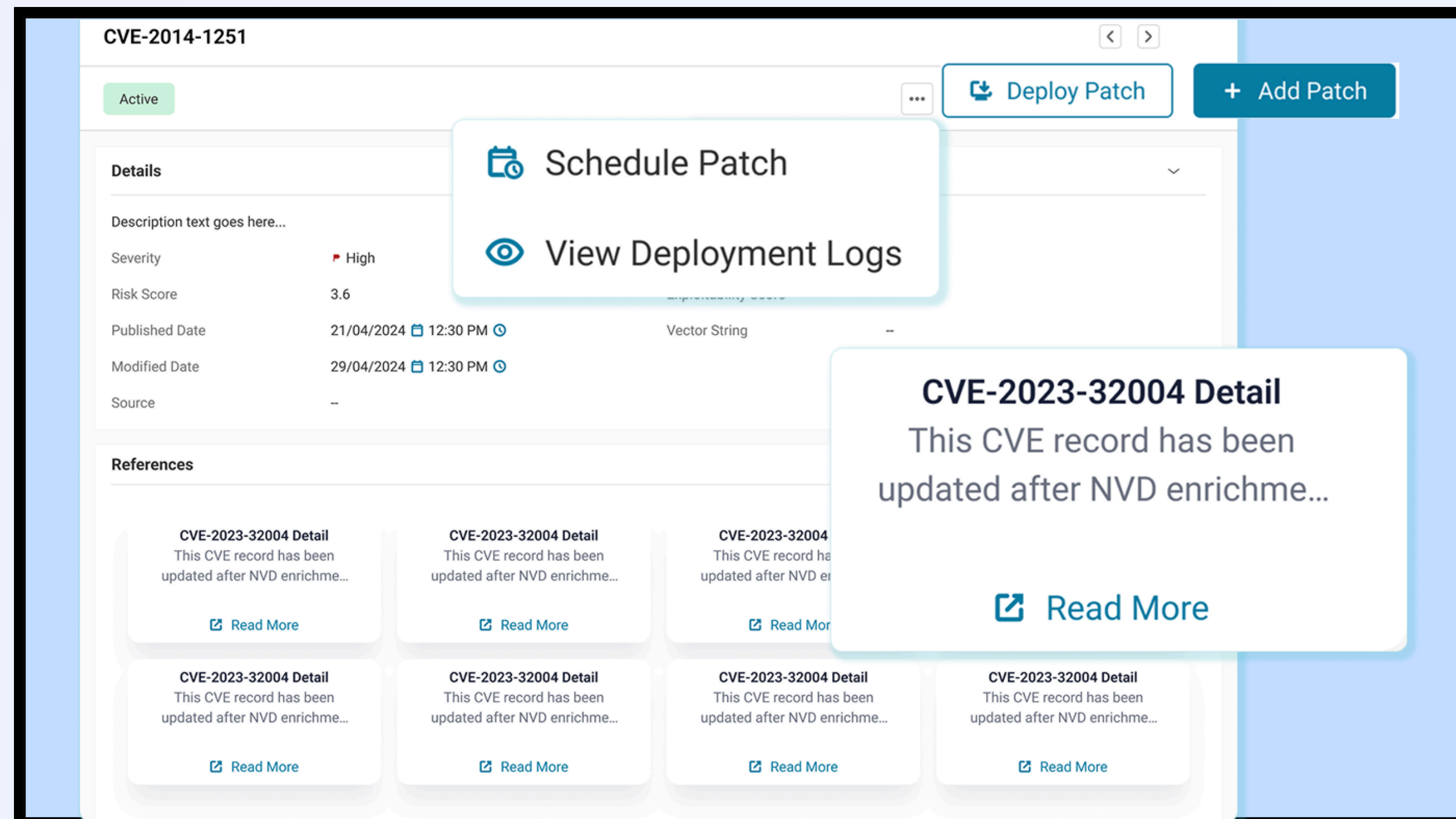
Instead of relying only on CVSS severity scores, AssetSonar factors in asset ownership, license status, and business usage context. This ensures high-risk assets are patched first, reducing exposure without unnecessary downtime

- Focuses patching on the most critical assets in your environment
- Cuts patching time by reducing noise from low-priority vulnerabilities



How This Helps:

- ✓ Reduces guesswork and delays
- ✓ Avoids irrelevant or duplicate requests
- ✓ Faster turnaround times with contextual accuracy



Automated Cross-Platform Patch Deployment

AssetSonar enables teams to deploy patches on Windows, Mac, and Linux seamlessly. Patches can be applied instantly or scheduled in advance, with built-in retry logic to ensure no failures go unnoticed

- Flexible support for both emergency and scheduled patching
- Consistent deployment across all devices and teams

How This Helps:

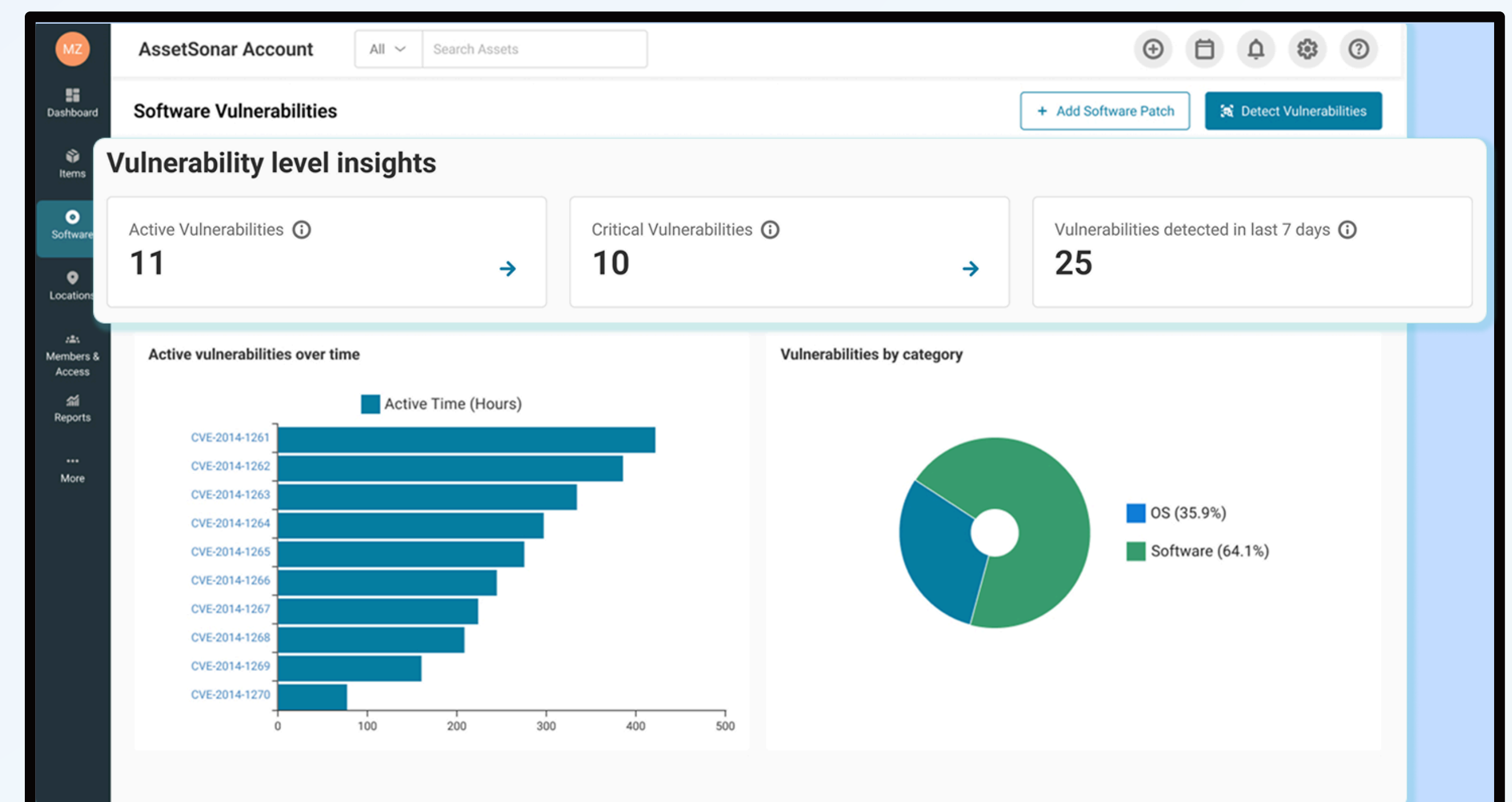
- ✓ One tool for software on all OS
- ✓ One-click or scheduled patches
- ✓ Retry failed patches



Compliance Dashboards & Audit-Ready Reports

AssetSonar provides real-time SLA dashboards, patch coverage metrics, and exportable audit trails. IT and security teams can demonstrate patch health and performance to leadership and auditors, reducing the time spent preparing evidence

- Export audit-ready patch reports instantly
- Track SLA performance to show governance maturity



How This Helps:

- ✓ Instant compliance proof
- ✓ Easy audit exports
- ✓ Less audit stress

[BOOK A DEMO](#)

EZO offers innovative asset intelligence and management solutions, trusted by thousands of organizations worldwide.

@2026 EZO AssetSonar. All rights reserved.