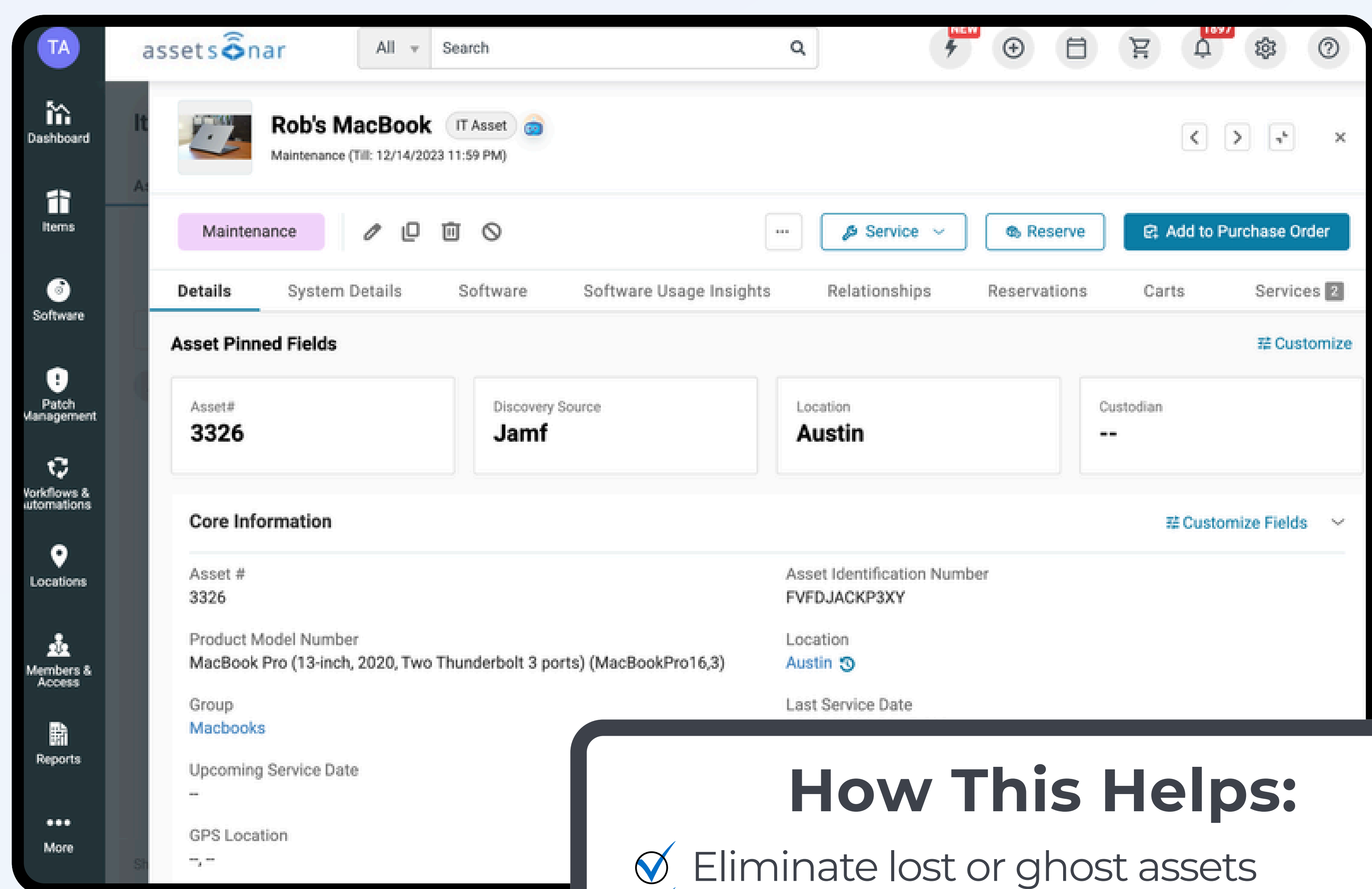
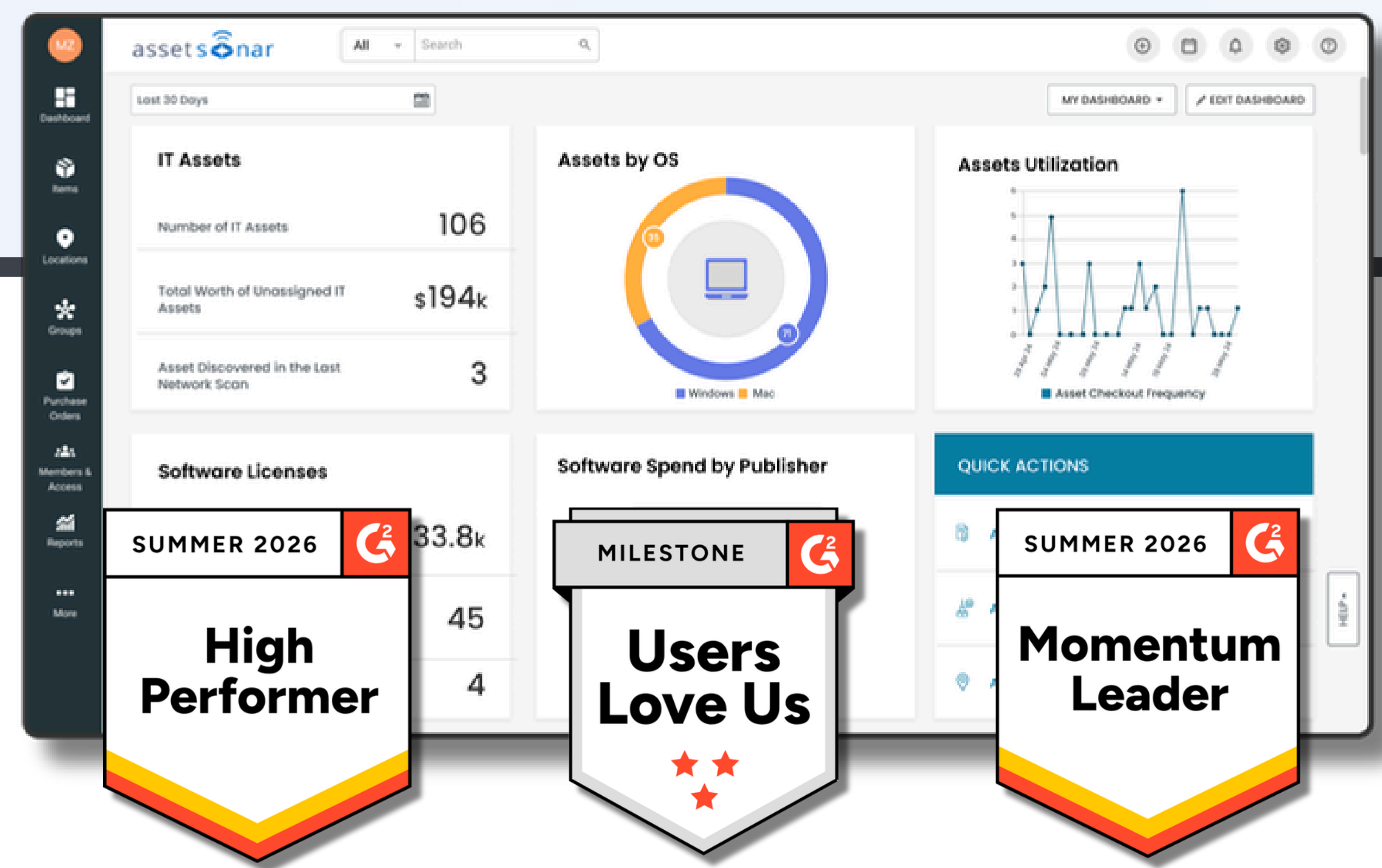


AssetSonar IT Asset Management

Your IT Control Center for Visibility, Cost, & Compliance

Built for scaling and maturing IT teams; asset intelligence to sharpen insights, tighten governance, and cut spend across IT assets.



How This Helps:

- ✓ Eliminate lost or ghost assets
- ✓ Optimize refresh cycles and budgets
- ✓ Strengthen audit accuracy with full device histories

Hardware Asset Management

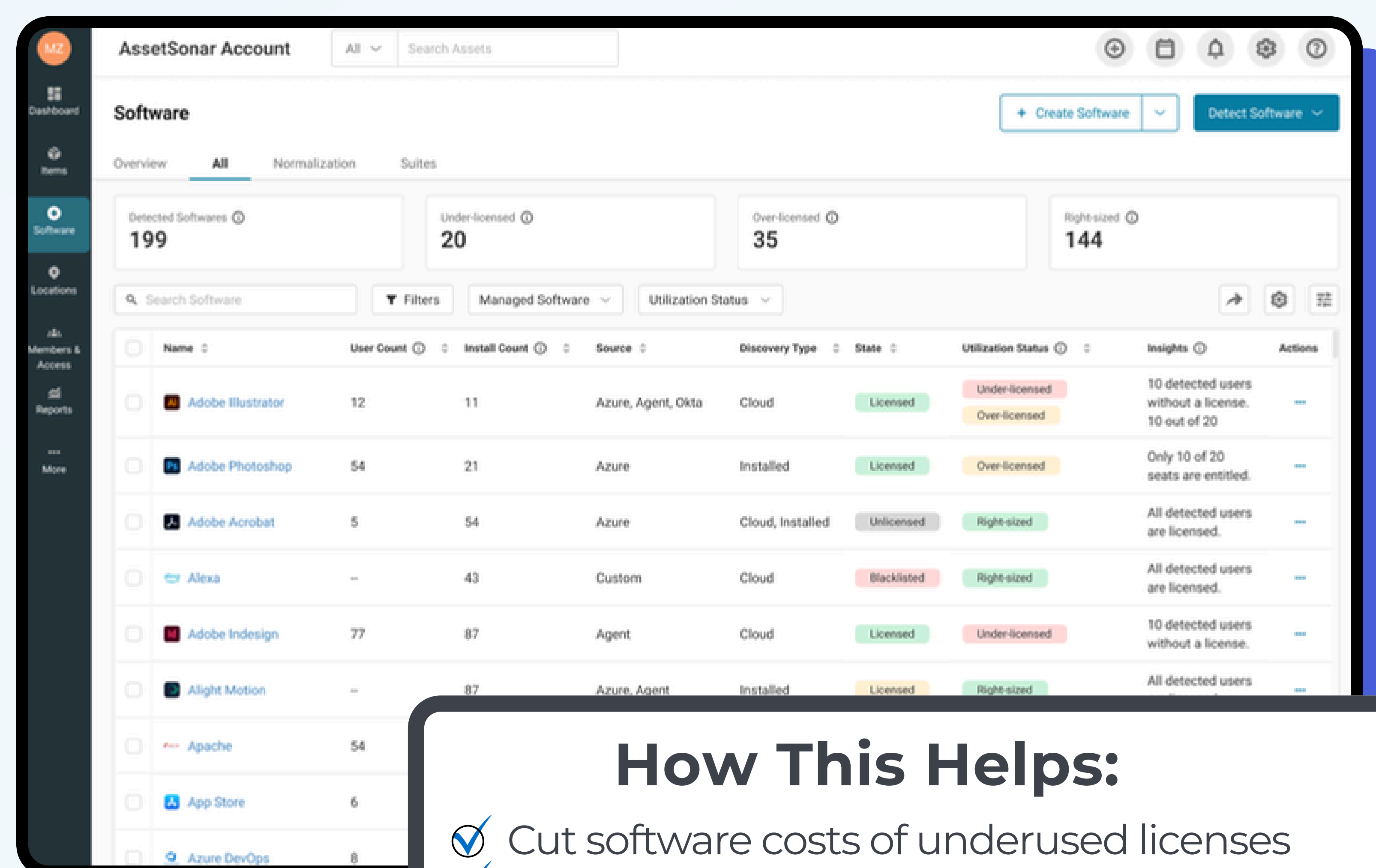
AssetSonar delivers a single source of truth for all your hardware assets across hybrid environments. Every record lives in the live IT Graph, connecting data to the user, ticket history, software, procurement cost, and lifecycle stage.

- Discover devices via the Agent, MDM integrations (Intune, Jamf, Kandji), agentless network scanning (Open-AudIT, SCCM), and direct SaaS Integrations
- Track device assignments, location, and chain of custody
- Monitor warranties, service history, and lifecycle costs
- Manage EOL/EOS alerts to prevent downtime

Software Asset Management

AssetSonar gives you a clear view of every installed, purchased, and used application across your organization. Integrate directly with Microsoft, Adobe, and browser-based discovery to uncover shadow IT and optimize license spend.

- Detect all installed apps and map to software licenses
- Track usage vs. entitlements to reduce shelfware
- Support for perpetual, subscription, and floating licenses
- Generate automated audit and compliance reports



How This Helps:

- ✓ Cut software costs of underused licenses
- ✓ Reduce audit risk with compliance tracking
- ✓ Simplify renewals and vendor reporting

Employee Offboarding

AssetSonar's Offboarding Center allows you to create workflows that fire the moment HR records a termination or an offboarding process is initiated. A unified layer of predefined offboarding workflows run automatically across ITAM and ITSM, Recover hardware, revoke SaaS licenses, disable identity access, and close with compliance-ready audit reports, all from the same offboarding ticket.

- HRIS or service-catalog triggered offboarding: initiated from integrations or from the ITSM service catalog
- One unified execution covers hardware recovery, SaaS license revocation, and IdP/MDM deprovisioning in the same layer
- Generate post-offboarding reports: Audit Report, Asset Recovery Report, and License Reclamation Summary
- Zoe, AssetSonar's AI Copilot, surfaces action recommendations for offboarding automations

| Ticket | Offboarding Member | Workflow | Created By | Created On | State | Steps Completion |
|---|--|-------------------------|---------------------------|------------------------|------------|------------------|
| #101 - Offboarding Request - Tony Stark | Tony Stark tony.stark@company.com | Standard IT Offboarding | Mark abdul.moiz@ezo.io | 10-06-2026 09:15:00 AM | Processing | 6/15 |
| #98 - IT Equipment Return - Alex Rivera | Alex Rivera alex.rivera@company.com | Standard IT Offboarding | Mark abdul.moiz@ezo.io | 09-06-2026 02:30:00 PM | Pending | 3/15 |
| #92 - Contractor Exit Checklist | David Kim david.kim@company.com | Contractor Exit | Mark abdul.moiz@ezo.io | 08-06-2026 11:00:00 AM | Processing | 3/15 |
| #87 - Executive Departure Approval | Rachel Green rachel.green@company.com | Executive Departure | Mark abdul.moiz@ezo.io | 07-06-2026 04:45:00 PM | Approval | 8/15 |
| #81 - Intern Program Completion | Tom Bradley tom.bradley@company.com | Intern Offboarding | Mark abdul.moiz@ezo.io | 05-06-2026 10:20:00 AM | Solved | 4/15 |
| #74 - Remote Employee Offboarding | Lisa Park lisa.park@company.com | Remote Employee Exit | Mark abdul.moiz@ezo.io | 28-05-2026 08:00:00 AM | Closed | 9/15 |

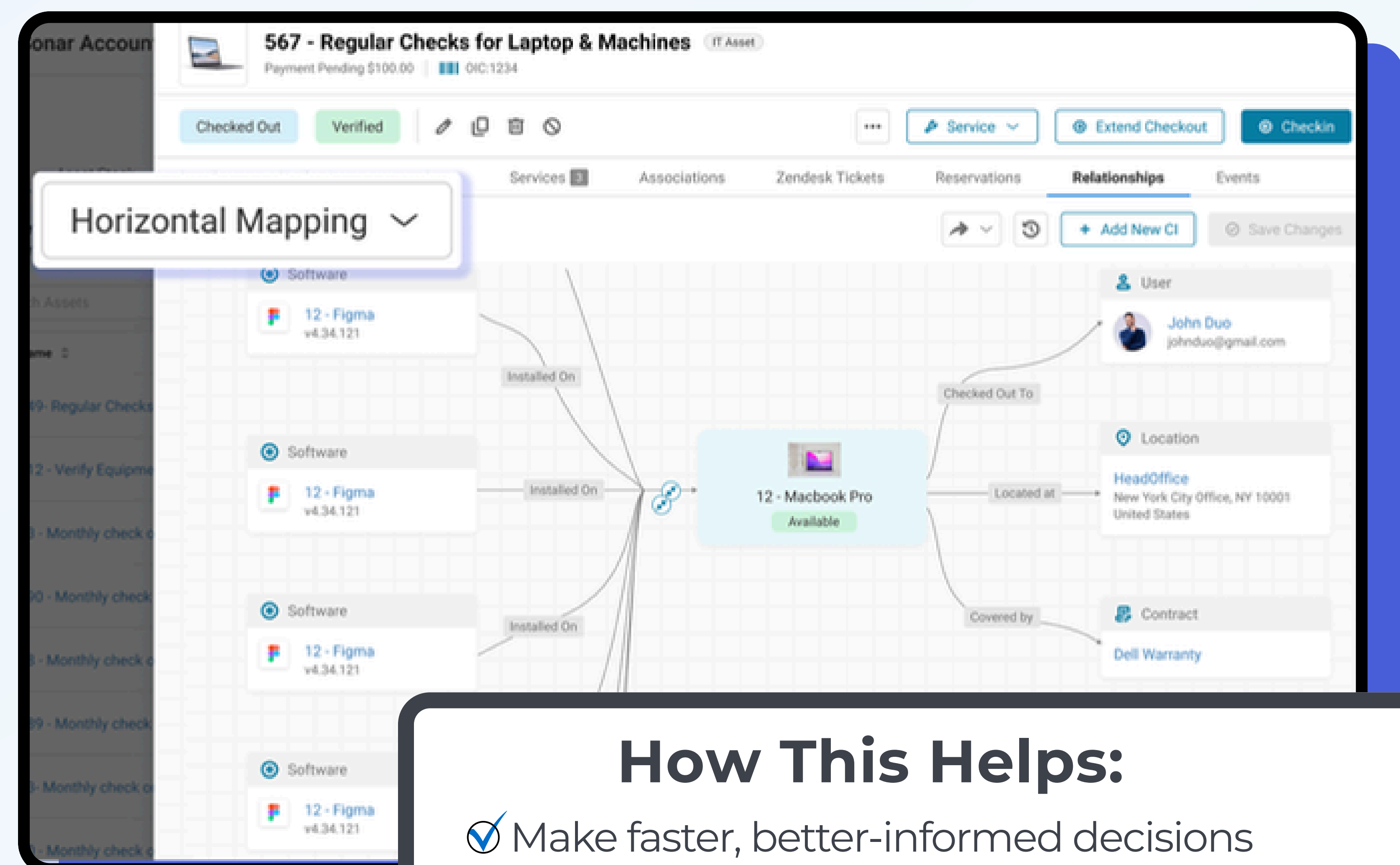
How This Helps:

- ✓ Track assigned items of a departing user
- ✓ Automate employee offboarding within the offboarding center
- ✓ Reduce breach risk from orphaned access and unrecovered hardware

The Unified IT Graph

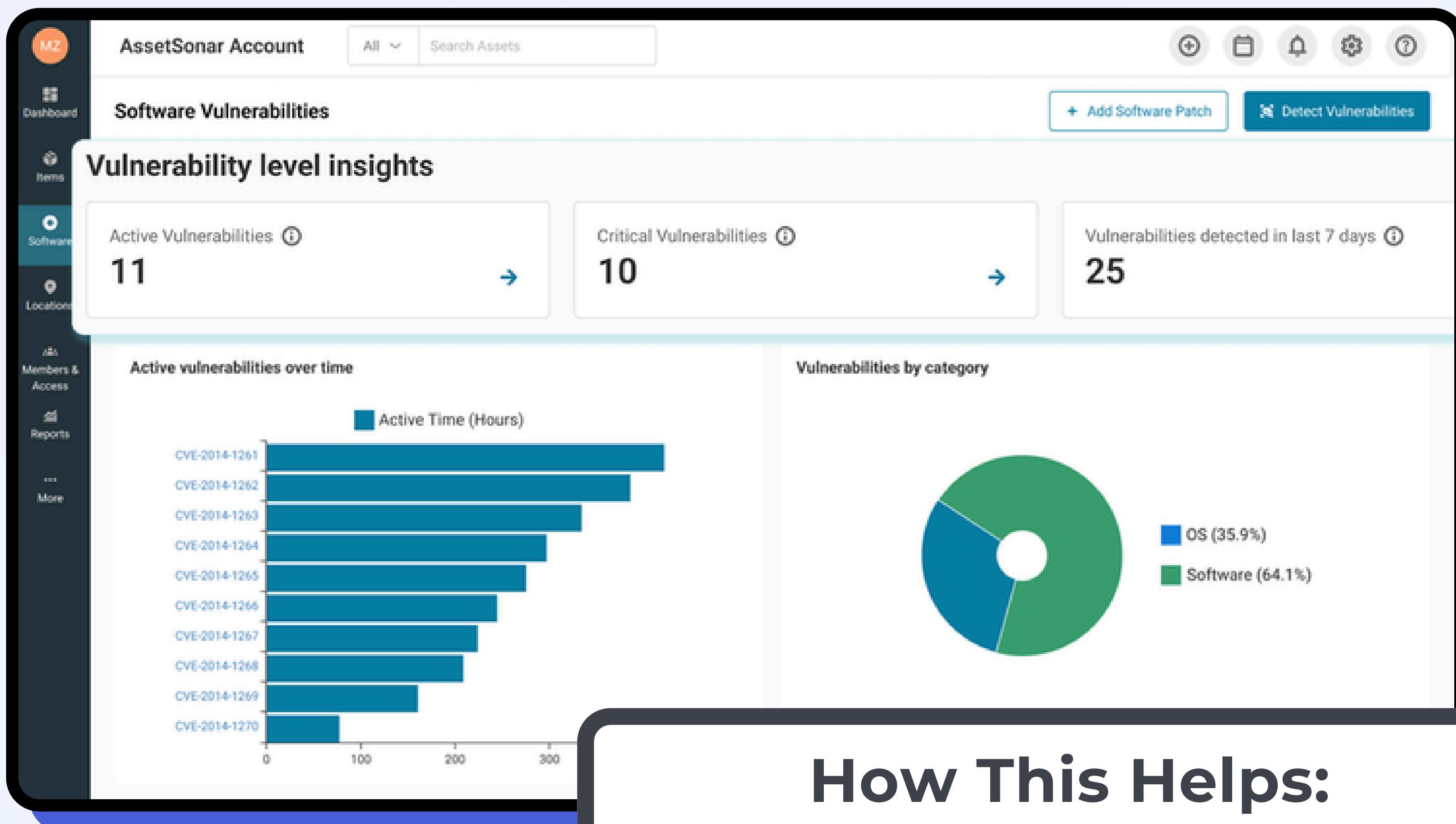
Every action in AssetSonar, a ticket resolved, a device deployed, a license reclaimed, an employee offboarded, updates the same live relational model: the IT Graph. It connects every device, user, application, ticket, license, and lifecycle event in a single system of record, so IT always works from a complete, connected, and unified context, instead of reconciling data across multiple scattered tools.

- Every asset record carries owner, location, custody history, installed software, tickets, lifecycle stage, and purchase cost in one view
- Real-time relationships: see every device assigned to a user, every ticket an asset generated, and every license. Feeds every downstream workflow, offboarding, refresh planning, patch prioritization, and audit reporting from one connected source
- Eliminates the data gap between ITAM, ITSM and SAM



How This Helps:

- ✓ Make faster, better-informed decisions without switching between tools
- ✓ Give IT, Finance, and auditors the same source of truth
- ✓ Every workflow acts on live data, not a stale export



How This Helps:

- ✓ Reduce exposure & patch fatigue
- ✓ Consolidate detection and deployment
- ✓ Provide instant audit proof with time-stamped patch history

Patch Management

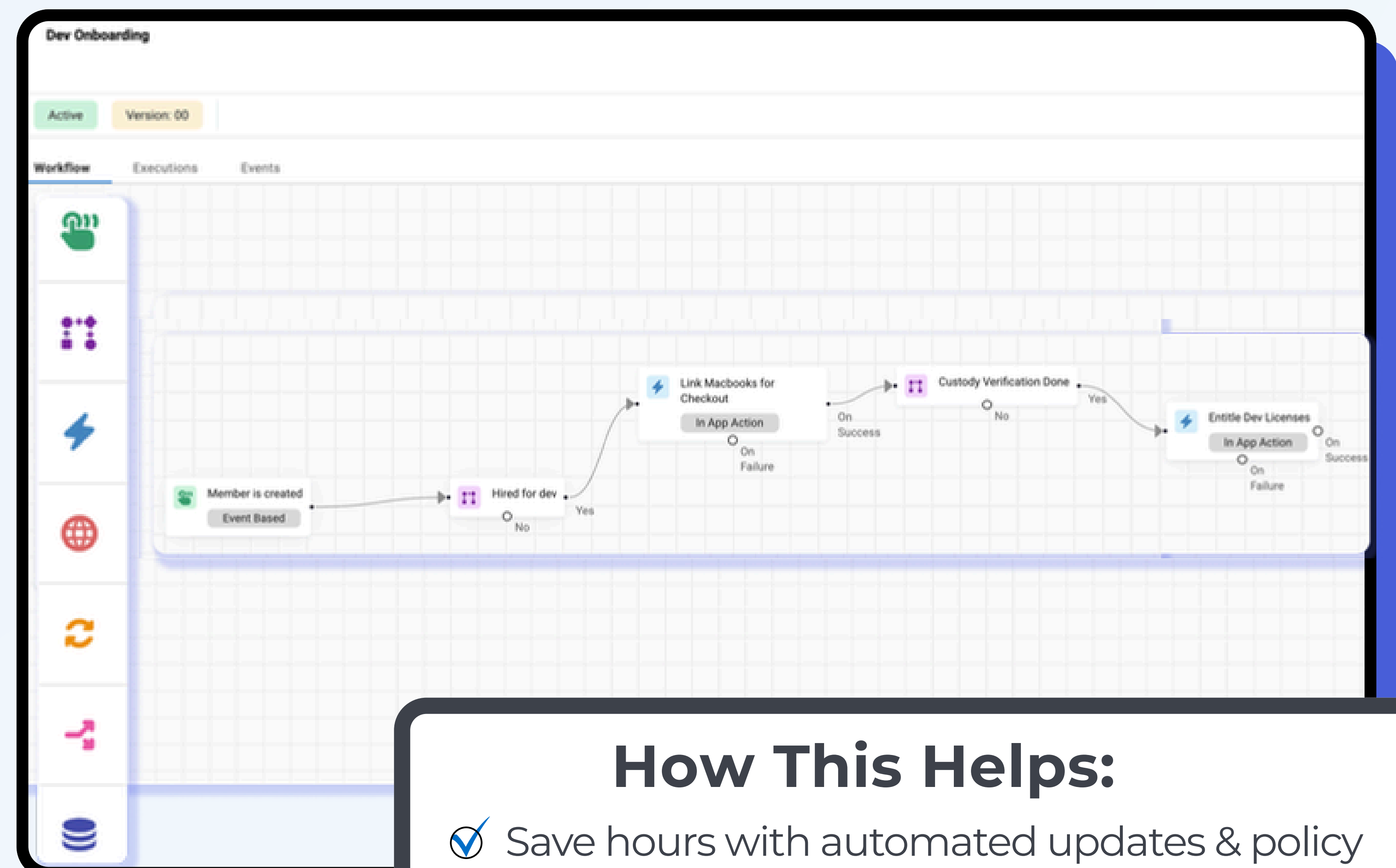
AssetSonar unifies vulnerability detection, risk-based prioritization, and automated patch deployment- giving IT and Security teams a single place to manage software health across Windows, Mac, and Linux environments.

- Automatically detect vulnerabilities and map them to NIST CVEs
- Prioritize patches by risk, asset ownership, and business impact not just CVSS score
- Deploy patches instantly or schedule them across OS and third-party apps
- Built-in retry logic and dashboards ensure nothing slips through the cracks

Automations & Integrations

AssetSonar helps IT teams eliminate manual tasks and build a connected ecosystem across your IT infrastructure. From automated onboarding and integration-driven workflows to employee offboarding, it keeps your data clean, synchronized, and actionable.

- Automate asset recovery, license revocation, and access deprovisioning from a single IT ticket
- Trigger alerts and actions across your ITAM + ITSM infrastructure
- Sync devices and users with MDMs (Intune, Jamf, Kandji), directories (Okta, Microsoft Entra ID, Google Workspace), and HRIS systems
- Build custom workflows using APIs and webhooks for two-way data sync



How This Helps:

- ✓ Save hours with automated updates & policy enforcement
- ✓ Maintain accurate, real-time asset records
- ✓ Improve collaboration between IT, security, and procurement teams

Plans built for every IT need

[See detailed plans →](#)

Priced per asset, no user/agent limits

IT Asset Management

Complete IT asset management for asset visibility, stronger security, and smoother operations.

MOST POPULAR

ITSM (ITAM included)

Everything IT: Unified service management + complete ITAM context built in.

Advanced SAM module

Complete Software governance and control; available with both ITAM & ITSM

Get a 7-day Free Trial

AssetSonar offers innovative asset intelligence & management solutions, trusted by thousands of organizations globally.